

The Barrweld™ family of products are engineered to provide unmatched protection for today's harshest industrial environments. Composed of high performance fibers, such as Twaron® and Lenzing FR® they are inherently flame resistant, highly durable, light weight and more comfortable than traditional treated fabrics and leather.

PRODUCT INFORMATION

| | Barrweld™ (Wine or Lime/Green) | Barrweld Extreme™ (Grey/Green) | Barrweld Light™ (Royal Blue) | Barrweld™ Plus (Wine or Lime Green) |
|--|-----------------------------------|--|---------------------------------|---|
| | Twaron®/Lenzing FR® Blend | Proprietary blend for improved burn through resistance | Twaron®/Lenzing FR® Blend | Water Repellant Barrweld Membrane Laminate |
| Sample Dry Weight (oz/ sq yd) | 8.25 | 9.9 | 7.35 | 9.2 |
| Thickness (in) | 0.02 | 0.023 | .018 | 0.024 |
| Finish | None | None | None | Water Repellant Treat- ed |
| Tabor Abrasion (Cycles) (H18/500g) - Total | 243 | 578 | ASTM D3884 Level 1 | 1,277 |
| Fabric Break, Grab (lbf) - Warp x Weft | 309 x 208 | 557 x 440 | 243.6 x 169.3 | 356 x 227 |
| After Flam (sec) - Warp x Weft | 0 x 0 | 0 x 0 | 0 x 0 | 32.49 x 36.84 |
| After Glow (sec) - Warp x Weft | 0 x 0 | 2.4 x 4.0 | 0.8 x 0.7 | 0 x 0 |
| Char Length (mm) - Warp x Weft | 0.7 x 0.6 | 0 | 8 x 7 | 0.6 x 0.5 |
| Melt / Dripping ? *ASTM 6413-99 | No | No | No | No |
| Cut Resistance - Average Rating Force (gf) | Level 1 | Level 1 | Level 1 | Level 1 |
| Arc Rating, ATPV: (cal/cm2) | 7.4 | 11 | 8.8 | 11 |
| Heat Attenuation Factor, HAF: (%) | 72.7 | 76 | 81 | 80 |

Disclaimer: The data presented herein has been developed under controlled manufacturing conditions is considered accurate. No warranty is expressed or implied regarding the accuracy or use of this data or the use of this product. It is the responsibility of the end user to determine suitability for use.

LAUNDERING GUIDELINES



GENERAL GUIDELINES

- Launder separately from Non-flame Resistant Garments. Lint from these garments may affect Flame Resistance.
- Do not use any bleaching (Clorox) or oxidizing ingredients or any fabric softeners.
- Garments can be pre-treated and washed in warm water between 40 and 60°C (104 – 140°F) with mild detergents.
- Do not over dry to minimize shrinkage.
- Dry cleaning is effective for highly oiled or greased garments.



Barrweld™ 8.5 oz Wine



HOME LAUNDRY

- Permanent press or cotton cycle with cold or warm water.
- Use detergents such as Cheer or Tide. Do not use soaps as they may leave deposits on the fabric affecting Flame Resistance properties.
- Do not use bleach (Clorox) or fabric softeners.
- Tumble dry. Permanent press for best appearance.



Barrweld™ 8.5 oz Lime/Green

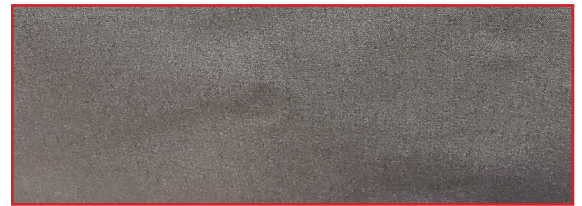


Barrweld™ 7 oz Royal Blue



INDUSTRIAL CLEANING

- Wash temperature should not exceed 140°F.
- Recommended to use high surfactant, low alkalinity detergent.
- Wash bath pH should not exceed 10.
- Minimize soil redeposition.
- Recommend tunnel drying for smoother garments and to extend longer wear. Garment temperature should not exceed 280°F.
- Tumble dryer basket temperature should not exceed 200°F with stack temperature of 130 – 160°F.



Barrweld™ 10 oz Extreme Grey/Green

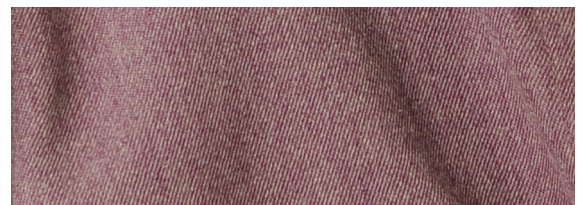


Barrweld® Plus 9 oz Lime/Green



DRY CLEANING

- Use clean perchlorethylene.
- Ensure that the solvent is completely evaporated.
- Redeposition must be avoided.



Barrweld® Plus 9 oz Wine